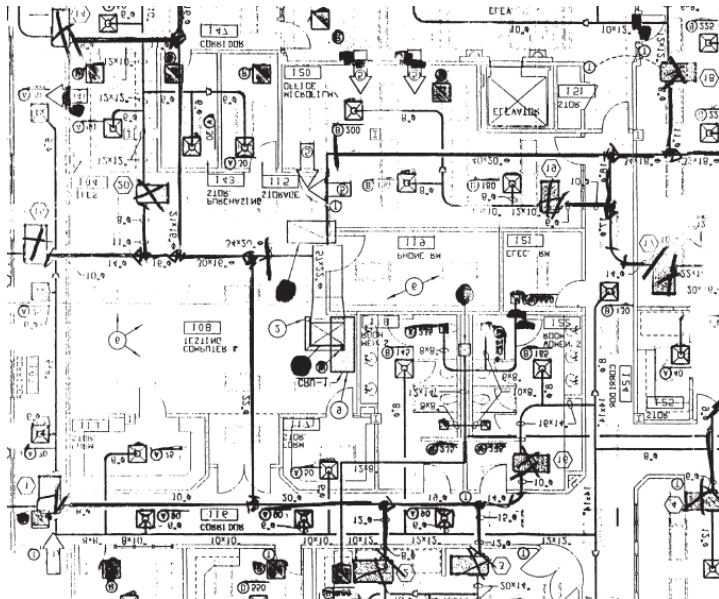


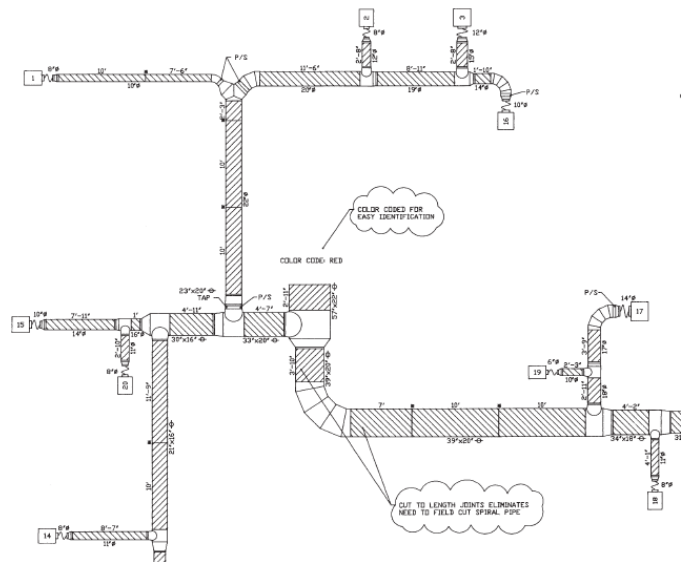
This is what you had to bid the job from.



- \*\*\* Single-line
- \*\*\* No visual scale of the duct
- \*\*\* Probable location conflicts
- \*\*\* Too much background information
- \*\*\* What am I going to get?

Wouldn't you rather have this?

- \*\*\* Drawn to scale
- \*\*\* True double-line drawing
- \*\*\* Distracting backgrounds removed
- \*\*\* Sizes clearly shown and lengths defined
- \*\*\* No field cutting of pipe
- \*\*\* Simplified layouts
- \*\*\* Duct that *fits!* Lower field labor cost.



### Spiral Pipe of Texas Computer Generated Assembly Drawings

As a leader in the spiral duct industry, SPOT was one of the first to furnish CAD drawings to the installing contractor. With our customized CAD drawings, ugly “stick” drawings or drawings not to scale are a thing of the past. What’s more, there is never a charge for these drawings. They are standard on all our jobs. That’s right --- they’re **free!** So be quick to “SPOT” this advantage in buying your next job from Spiral Pipe of Texas.