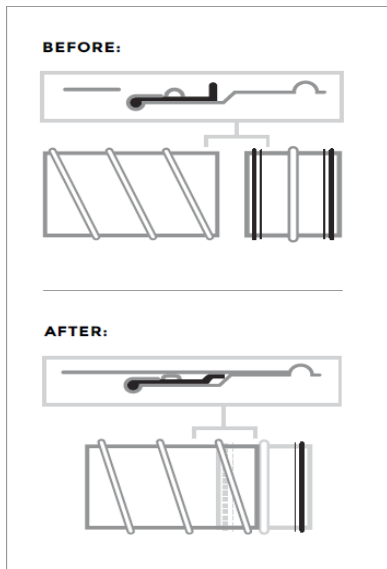


## Introducing Gasket-Tite™ from SPIRAL PIPE OF TEXAS

### Sealed Right! Sealed Tight!

**Gasket-Tite™** is our next generation of self-sealing duct systems at Spiral Pipe of Texas. Available in round sizes from 4" to 24" diameter, we give you the ability to easily assemble duct systems that exceed ASHRAE and energy code leakage standards – but without the need for mastic sealants.

### Why Should You Use **Gasket-Tite™** from Spiral Pipe of Texas?



**Consistent Performance** – All duct systems are required to be sealed. All SMACNA seal classes – A, B and C – require the transverse joints where two duct sections join to be sealed. ASHRAE Standard 90.1 requires you to use Seal Class A for all duct systems and tells you how much you are allowed to leak. Depending on where your job is and what version of the standard is in your building code, that can be anywhere from Leakage Class 6 (2010) to Leakage Class 4 (2019)<sup>1</sup>. Most industry references agree that a properly sealed spiral duct system will meet or exceed Leakage Class 3. How will you know how much your duct system leaks until you test it? The **Gasket-Tite™** system gives you confidence in the performance of your duct joints. We have consistency in manufacturing and we adhere to SPIDA tolerance standards. Most important, we've tested the system. Testing in accordance with AMCA 511-13 "Transverse Duct Connections / Air Leakage Rating Requirements" we can give you the expected leakage of each **Gasket-Tite™** duct joint.

**Labor-Saving Installation** – When using mastics, rolled sealants and tapes, sealing a duct system is an extra and inconsistent step in the process. Not with **Gasket-Tite™**. The joint sealing is accomplished as an integral part of slip-fit installation. No sloppy mess. No gaps in sealant coverage. And no curing time. The duct system can be leak tested immediately. The 180-degree hemmed edge that holds the gasket in place makes connection even easier. No sharp edges and consistent diameter.



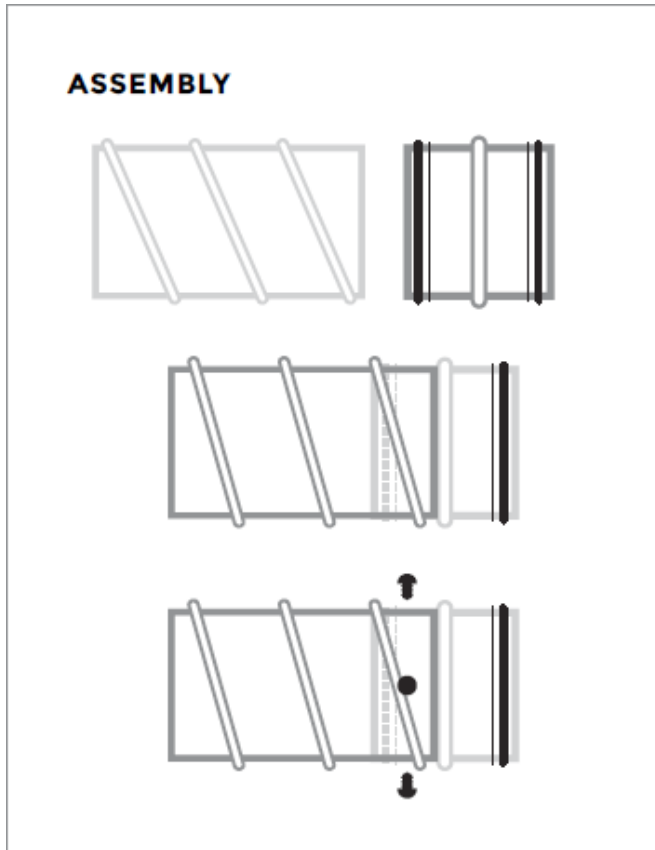
**No!**

**Better Appearance** – Exposed duct systems have to be sealed too. And no one wants the sight of field-applied mastic covering each duct joint. With **Gasket-Tite™**, the sealant is integral to the joint – and on the inside. Do you ever see those ugly dust streaks at the joints of exposed duct systems? That's the sign of an unsealed or poorly sealed duct joint. The **Gasket-Tite™** system gives you a full and consistent seal at all 360 degrees of the joint circumference.



**No!**

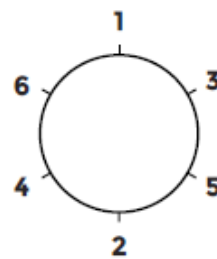
<sup>1</sup>Leakage Class is the CFM leakage volume per 100 ft<sup>2</sup> of duct surface area at 1" WG pressure.



1. Place the hemmed end of the fittings in the spiral pipe, then apply pressure and the fitting will slip into place, stopping at the bead/pipe stop.

2. Placement of the fastening screws should be opposite from one another, evenly spaced around the circumference (see diagram). Screws should be placed approximately 1/2" from the bead in order to avoid damaging the spiral seal gasket. In the event of incorrect installation, holes caused by the screw must be sealed before reassembly.

3. Quantities and sizes to be used are listed below.



Spiral Duct Diameter	Screw Diameter	Quantity
3" - 5"	1/8"	2
6" - 10"	1/8"	3
12" - 24"	1/8"	4
26" - 36"	1/8"	6

4. Always start the first fastener at the largest radial gap between fitting and duct. Be sure to achieve even distribution around the circumference.

Product Specifications
Available sizes: 4" - 24"
Gasket Material: EPDM rubber
Base Gasket: ASTM D2000-86 M3BA 810 B13 C12 F17
Sealing Gasket: ASTM D2000-86 M8BA 507 B13 C12
Operating Temperature: -20° F to 212° F
Flame Spread and Smoke: 0 / 0 ASTM E-84-91A
Materials: Galvanized (standard) Also: PaintGrip, Aluminum, Stainless Steel (304 & 316)

**The Gasket-Tite™ system is available in single-wall and Spiracoustic round duct systems.**